



**State Name:** Indiana

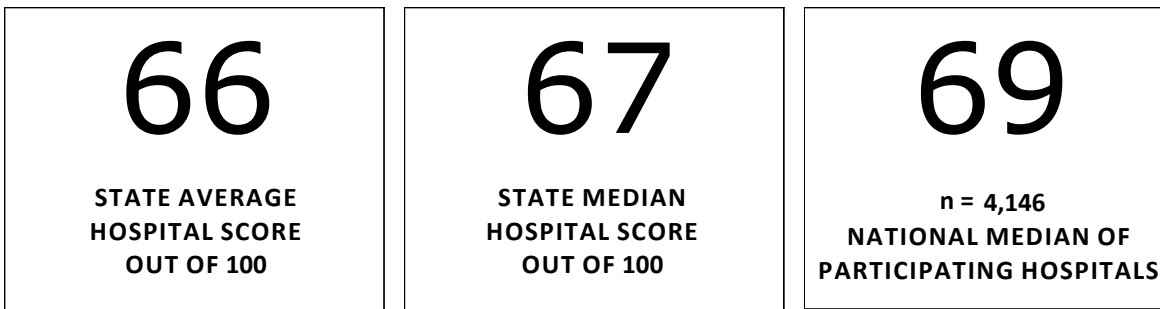
**Report Date:** 3/5/2014 11:35:46 AM

**Number of Hospital Respondents:** 106

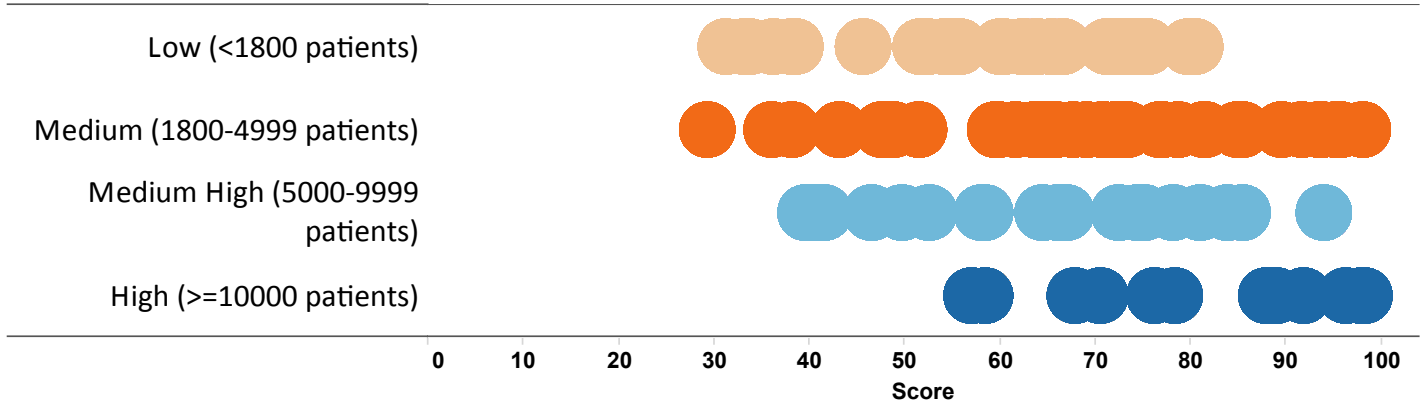
**Number of Hospitals Assessed:** 121

**Response Rate:** 87.6%

**STATE SCORE AND COMPARATIVE SCORES:**



**DISTRIBUTION OF STATE SCORES FOR EACH VOLUME TYPE:**



**BREAKDOWN OF STATE SCORES FOR EACH VOLUME TYPE:**

Annual Pediatric Volume	# of Hospitals	Avg. Score	Median Score	Min. Score	Max. Score
Low (<1800 patients)	36	59.2	60.3	31	80
Medium (1800-4999 patients)	38	68.9	70.8	29	98
Medium High (5000-9999 patients)	20	65.1	66.5	40	94
High (>=10000 patients)	12	80.8	83.1	57	98
<b>Grand Total</b>	<b>106</b>	<b>66.2</b>	<b>66.7</b>	<b>29</b>	<b>98</b>

*NOTE: Blank indicates fewer than 5 hospitals; score can't be shown.*